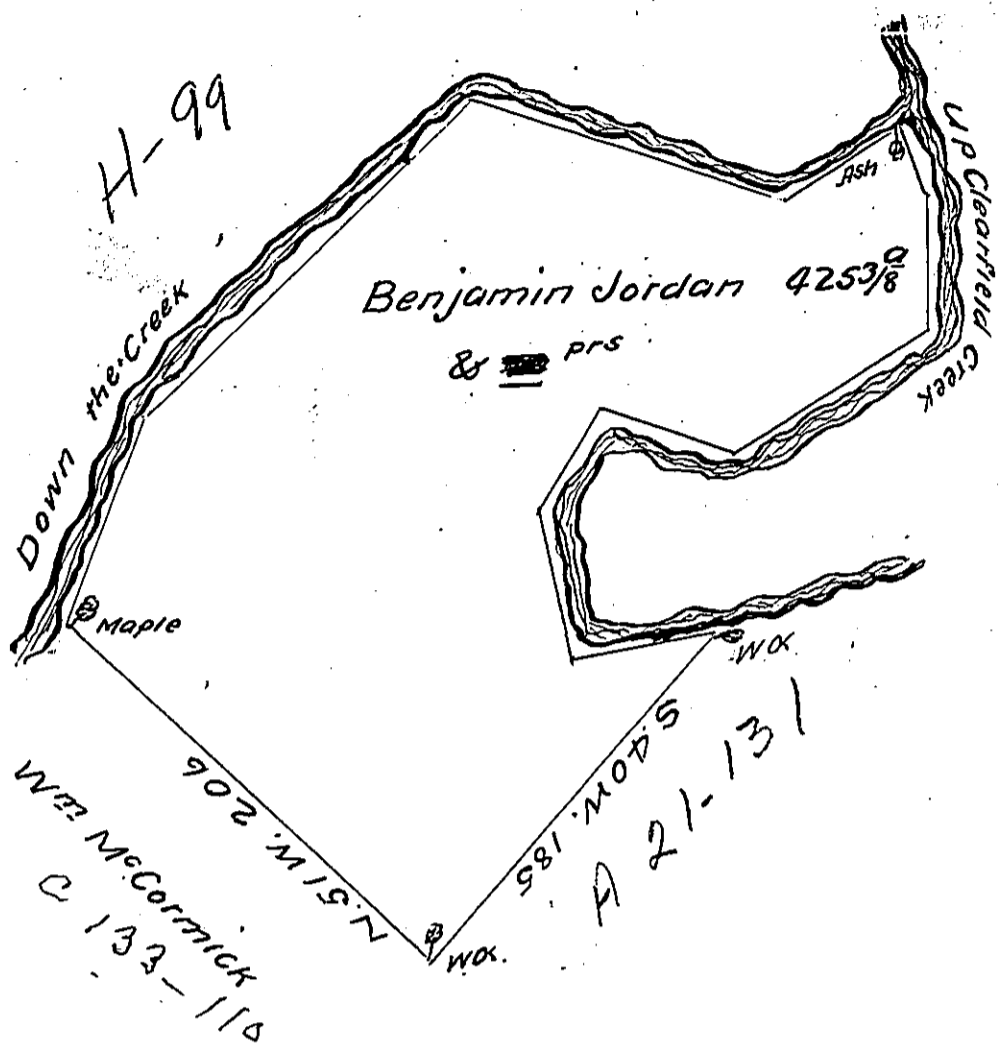


Courses up Clearfield Creek

S 23 E 28
S 3 E 60
S 55 W 100
N 72 W 60
S 31 W 50
S 14 E 64
N 76 E 61
<hr/>
423

Courses down the Branch

N 20 E 105
N 45 E 186
S 75 E 146
N 52 E 60
<hr/>
497



Draught of a tract of Land situate on the East side of the first northerly branch of Clearfield Creek about seven miles from the mouth of said branch and extending up the east side of the same in the County of Bedford containing four hundred and twenty five acres and seventy perches & the usual allowance of six per cent for Roads & co.

Surveyed for Benjamin Jordan June 10th 1785 in pursuance of a warrant dated July 8th 1784.

George Woods D.S.

To John Lukens Esq^r S.G.

IN TESTIMONY that the above is a copy of the original remaining on file in the Department of Internal Affairs of Pennsylvania, made conformably to an Act of Assembly approved the 16th day of February, 1833, I have hereunto set my Hand and caused the Seal of said Department to be affixed at Harrisburg, this fourteenth day of November 1911

Henry Howell
Secretary of Internal Affairs.